



Accurately Weighing Africa



Train Weighing System

T-WIM

electronic weigh sleeper
in-motion train scale up
to 80kmh

The T-WIN In-Motion (WIM) train scale consists of two (2) electronic weigh sleepers & four (4) dummy sleepers braced together forming one solid structure, including accessories, control cabinet and PC train weighing software.

A unique bracing technique has been used to provide maximum stability of the train scale in the ballast. This also helps to eliminate impact effects at the weighing transition points by having the steel framework as one complete rigid section greatly enhancing weighing accuracy and scale

The T-WIN train scale is the ideal low speed solution for mine loadouts, industrial plants, cement plants, power stations, steel mills etc.

Installation of the T-WIN train weighing system takes approx 1 day. Concrete foundation or civil works are not always required, however, this is greatly dependant upon site conditions, although some form of ballast stabilisation is highly recommended. (ie. we can use ballast matting)

The T-WIN train weighing system is installed one wagon or more out from the loadout, and provides the operator with bogie and wagon weight data in real time. This unique train weighing system enables the loading operator to regulate the filling so that the wagons are not overloaded. Weight data storage, printout & other features are also available.



Patents Apply



Weighing Speed	Approx. Accuracy (OIML)
1 - 10 km/h	Class 1 Wagon Class 0.5 Total Train
1 - 15 km/h	Class 2 Wagon Class 0.5 Total Train

Higher speeds are available.

Accuracies are based upon track, rolling stock and foundation conditions. Higher speeds may be achievable.

- Actual reliable load cell based system
- No rail cutting, welding or grinding required
- Minimal installation/repair track down time
- Temperature compensated

T-WIM

TECHNICAL DATA

Capacity:	37.5t per Axle (Can be upgraded to 50t per Axle)
Approx. Accuracy:	Class 0.5 ~ 2 wagon (OIML) Class 0.2 ~ 1 total train (OIML) (Improved accuracy can be achieved depending on site conditions)
Operating Temperature:	-20°C - +60°C (in-track equipment only)
Transit Speed:	Unlimited (Approval by rail authority)
Voltage:	110C - 240V AC / 24V DC
Data Transmission:	TCP/IP



Installing the T-WIM train scale in concrete

The T-WIM fulfils the need for a highly accurate and reliable “LOAD CELL” based weighing system with the following features:

- Accurate, robust and well proven loadcell technology (not externally bonded strain gauge type).
- Simple to install - minimal track down time.
- No cutting of rail.
- Should any in-track component need replacing this can usually be done within 1 hour by a local contractor.

*** Australian / German Design ***

CUSTOMER CALL CENTRE 0861 422 134
E-mail info@sascoafrica.com
Web www.sascoafrica.com

the best in every weigh



Accurately Weighing Africa

PTW-D

dynamic mobile train weigher



5 easy steps to install:

FEATURES:

- User friendly
- Five easy steps to install (2 men - approximately 15 minutes)
- Transportable in the boot of a car
- Loadcell based system
- In motion weighing
- Axle, wagon and total train weight
- Individual wheel weight (optional)
- Fits all recognised rail gauges
- Fits most rail sizes
- Instant printout or download to PC



MTW ready to be assembled

The Sasco PTW-D is a train weighing system that can be transported in the boot of a car and set up to weigh and spot check a rail vehicle/train anywhere.

It offers one of the world's most convenient, safe & accurate train weighing solutions.

The PTW-D is a load cell based system which fits to the inner sides of most conventional rail. When the wheel flange rolls up the ramp, the wheel's tyre is raised just clear of the rail head and weighed. The advantage of weighing axle by axle is that there is no restriction with regards to wagon type. It is factory pre-calibrated, so that no transport of test weights are required. (individual wheel weights can also be obtained).



Measuring the height



Attaching the shoes



Inserting the MTW into the track



Connecting the cables



Battery operated digital readout with built-in printer in carry case

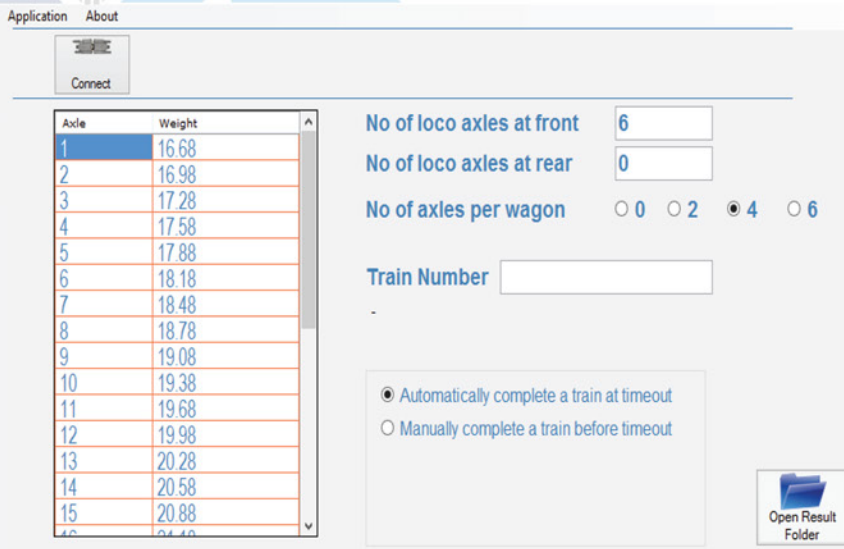
BENEFITS:

- No track downtime during installation
- No costly civil works required
- Battery operated
- Simple operation

PTW-S

TECHNICAL DATA

Length	600mm ~ 656mm
Approx. Weight	20kg -100kgs
Power Supply	240V AC / 12V internal battery
Materials	High quality tool and mild steel
Capacity	17.5t / wheel, 35t / axle
Increment Size	0.05t
Protection Class	IP-67 / IP-65
Temperature	-20°C ~ +70°C
Mounting	Rail shoes to fit most rail types
Installation Time	approx 10 ~ 15 minutes (two men)
Weighing Speed	Up to 5kmh
Accuracy (approx.)	2-3%. Less than 1% under ideal conditions



SAMPLE SOFTWARE(optional)

A/N	Wheel 1	Wheel 2	Axle Total	WC	km/h
Locomotive					
F	5350 kg	5850 kg	11200 kg	0	4.7
F	5350 kg	5850 kg	11200 kg	0	4.5
F	5350 kg	5850 kg	11200 kg	0	4.3
F	5350 kg	5850 kg	11200 kg	0	4.3
F	5350 kg	5850 kg	11200 kg	0	4.2
F	5350 kg	5850 kg	11200 kg	0	4.2
Wagon 1					
1	5350 kg	5850 kg	11200 kg	0	4.4
2	5350 kg	5850 kg	11200 kg	0	4.3
3	5350 kg	5850 kg	11200 kg	0	4.2
4	5350 kg	5850 kg	11200 kg	0	4.3
			44800 kg		
			Total wagon weight	44800 kg	

SAMPLE PRINTOUT
(from built in Printer)

CONSISTS OF(single base unit):

- 2 x loadcells
- 2 x scale main bodies
- 1 x set of shoes (to suit nominated rail type)
- 1 x set of spacers
- 1 x height measuring rod (to suit nominated track gauge)
- 1 x weight indicator and printer housed in carry case
- 1 x battery charger
- 1 x spanner
- 1 x cable set
- 1 x operation manual



* The PTW-S is not trade approved and should not be used for commercial transactions

CUSTOMER CALL CENTRE 0861 422 134

E-mail info@sascoafrica.com

Web www.sascoafrica.com

the best in every weigh



Accurately Weighing Africa

PTW-S

static mobile train weigher

5 easy steps to install:

FEATURES:

- User friendly
- Five easy steps to install (2 men - approx. 15mins/system)
- Transportable in the boot of a car
- Loadcell based system
- Static weighing
- Wheel, axle, bogie and vehicle weight
- Multiple bases can be combined
- Fits all recognised rail gauges
- Fits most rail sizes
- Instant printout or download to PC



MTW ready to be assembled

The PTW-S comes with either 1, 2 or 4 bases, dependent on the client requirement. It is easily transportable in its own transit cases and can be moved from one workshop to another with ease.

It provides a robust, reliable and accurate weighing solution, and combined with its portability, allows the weighing of various axle, bogie and vehicle centres without foundation alterations.

The PTW-S design incorporates a chassis arrangement with an integrated loadcell, this design means weight is applied directly to the loadcell and not through the rail.



Measuring the height



Attaching the shoes



Inserting the PTW-S into the track



Connecting the cables



Battery operated digital readout with built-in printer in carry case

BENEFITS:

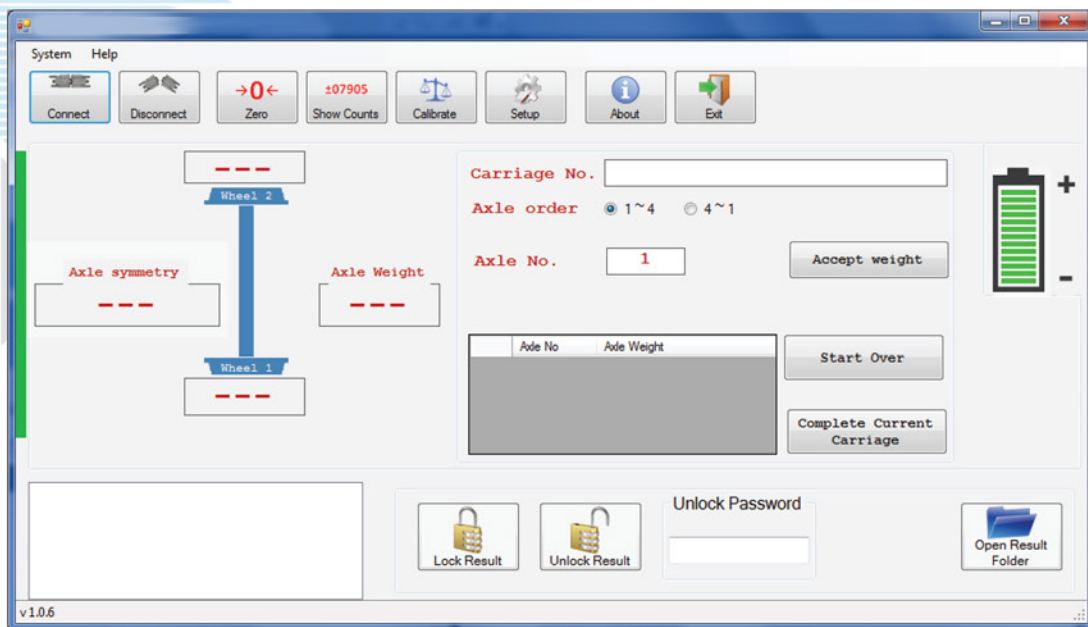
- No track downtime during installation
- No costly civil works required
- No test train required for calibration



PTW-S

TECHNICAL DATA

Length	600mm ~ 656mm
Approx. Weight	20kg -100kgs
Power Supply	240V AC / 12V internal battery
Materials	High quality tool and mild steel
Capacity	17.5t / wheel, 35t / axle
Increment Size	0.02t
Protection Class	IP-67 / IP-65
Temperature	-20°C ~ +70°C
Mounting	Rail shoes to fit rail type
Installation Time	10 ~ 15 minutes (two men)
Accuracy	loadcells calibrated statically to +/-100kg
Standard Number of Bases/Wheels	Between 1 to 4 bases / 2 to 8 wheels (Over 4 bases available on request)



Customized PC software(optional) allows to display and record all the weighing

CONSISTS OF(single base unit):

- 2 x loadcells
- 2 x scale main bodies
- 1 x set of shoes (to suit nominated rail type)
- 1 x set of spacers
- 1 x height measuring rod (to suit nominated track gauge)
- 1 x weight indicator and printer housed in carry case
- 1 x battery charger
- 1 x spanner
- 1 x cable set
- 1 x operation manual



* The PTW-S is not trade approved and should not be used for commercial transactions

CUSTOMER CALL CENTRE 0861 422 134

E-mail info@sascoafrica.com

Web www.sascoafrica.com

the best in every weigh