

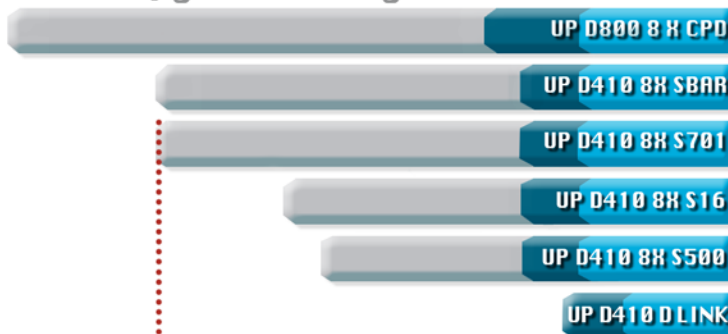


Accurately Weighing Africa



■ load Cells ■ indicator ■ other

### 8 Load cell upgrades using various Load cells



# S701

## high precision loadcell



### DESCRIPTION

#### General

Sasco's Tier I Technology comprises the Bilanciali range of instrumentation, which is recognised as the leader in terms of accuracy, reliability and functionality.

Sasco's Tier II technologies include the S-Series range of loadcells such as the S701. The S701 is a direct trade approved generic replacement to the 8701.

The S701 is a hermetically sealed load bearing unit operating in compression to produce a standard electrical output which is proportional to the load applied.

#### Construction

The S701 is 100% stainless steel with a natural finish.

#### Capacities

- 11,000 kg
- 23,000 kg
- 45,000 kg



**Accuracy**  
5000d OIML

**Approvals**  
SA 1430  
OIML Approved

**EXAMPLE**  
Road weighbridges  
Rail weighbridges  
Tank weighing  
Process weighing  
Tank and tower weighing

#### SPECIAL FEATURES

- High accuracy
- Environmentally protected
- 100% Stainless steel
- Excellent repeatability

#### SPECIFICATIONS

Sealed to BS EN 60529: 1992,  
Calibrated temperature range: 10 C to + 40 C  
IP67.



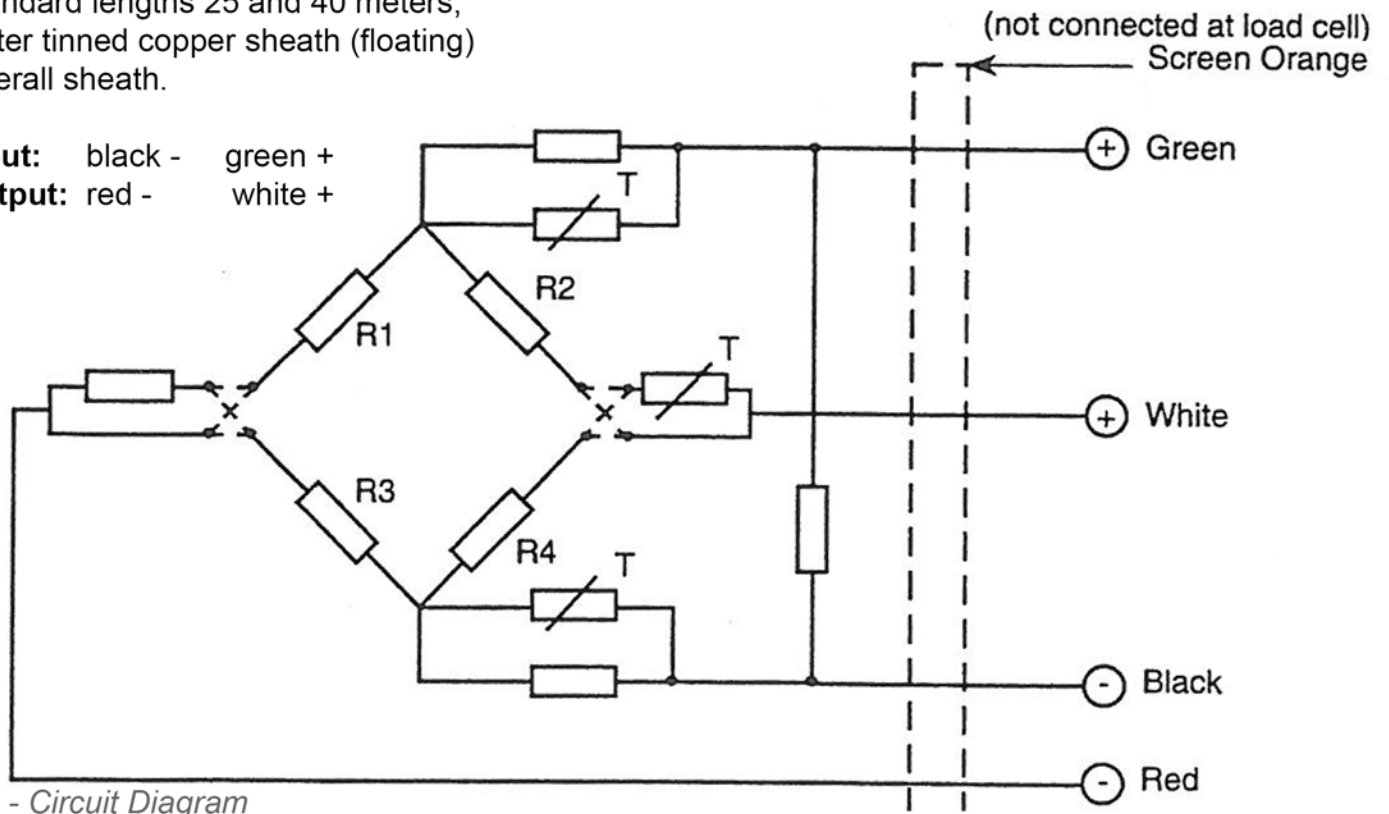
## SPECIFICATIONS

Excitation Electrical (Recommended)	15 v, AC or DC
Excitation Electrical (Maximum)	20 v, AC or DC
Terminal Resistance Input at 20° C	450 ohms ± 1%
Terminal Resistance Output at 20° C	480 ohms ± 5 ohms
Rated Output	1.75 mV/V ± 0.1%
Zero Balance	± 1% of Rated Output
Non-Linearity (Maximum)	0.1% of Rated Output
Repeatability	0.01% of Rated Output
30 min Creep and Zero Return (OIML R60)	± 0.012% of Rated Output
Temperature Effect on Rated Output (-10° C to + 40° C)	± 0.0008%/° C
Temperature Effect on Zero Balance (-10° C to + 40° C)	± 0.001 %/° C
Overload Rating (without affecting Performance)	150% Rated Capacity
Overload Rating (Ultimate)	225% Rated Capacity
Insulation Resistance (Minimum)	5,000 megohms

## ELECTRICAL TERMINATION

4 core 7 x 0.12 mm equivalent.  
 Standard lengths 25 and 40 meters,  
 Outer tinned copper sheath (floating)  
 Overall sheath.

**Input:** black - green +  
**Output:** red - white +

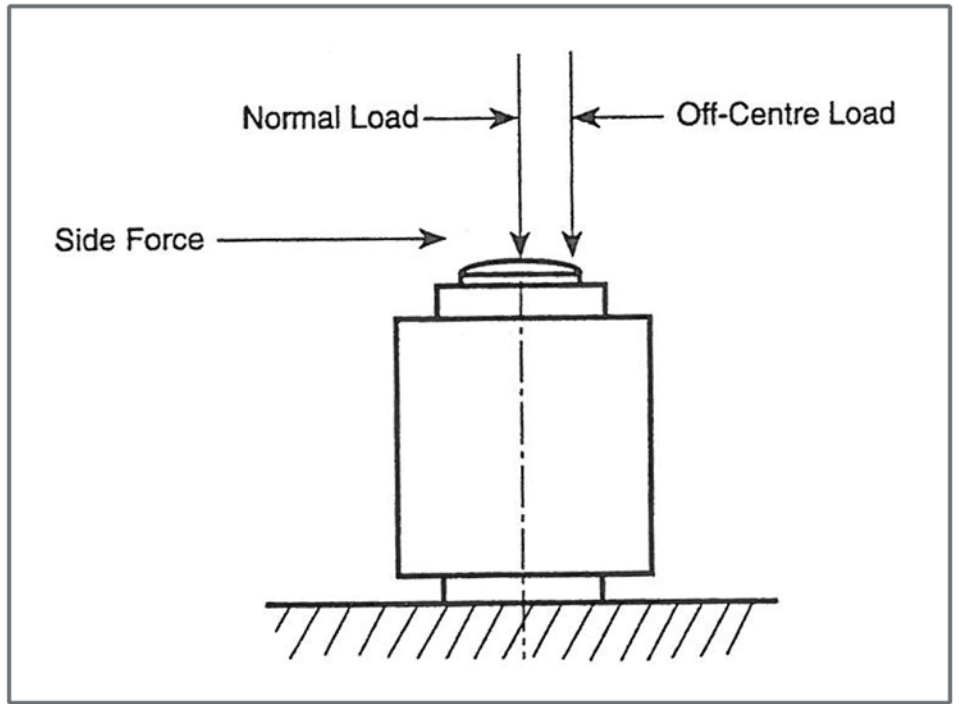






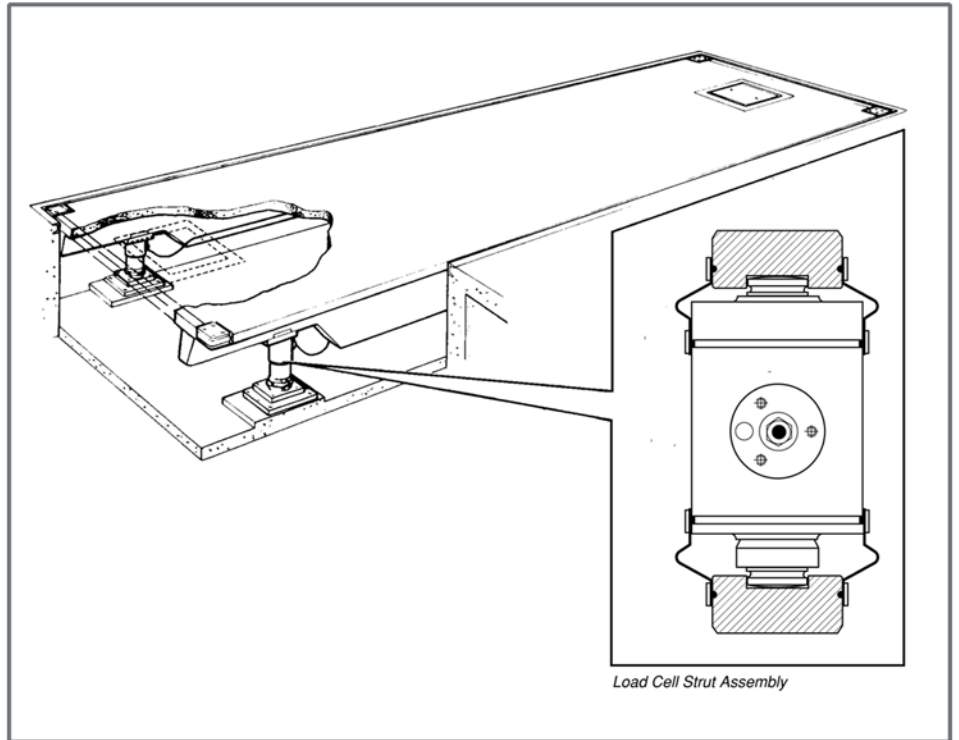
## APPLICATIONS

The S701 is designed to operate with loads applied to the centre of the loadcell base acting through the central axis of the loadcell. To ensure high accuracy of weighing, steps should be taken to limit sideways movements through the use of stops or ties.



## WEIGHBRIDGE EXAMPLE

The following diagram shows a typical weighbridge installation. In this diagram a strut arrangement has been included to maintain high accuracy weighing.



Customer Call Centre: 0861 422 134  
Call Centre Hours: 24 Hours, 7 Days a week  
Group Support Head Office: C/O Apex & Blackburn Streets  
Apex Industrial  
Benoni  
Phone : +27 (0) 11 746 6000  
Fax : +27 (0) 11 746 6100  
E-mail : info@sascoafrica.com



CUSTOMER CALL CENTRE 0861 422 134  
E-mail info@sascoafrica.com  
Web www.sascoafrica.com

the best in every weigh